



Garrick House, Beatrice Court, Lichfield

£235,000

🛏️ 2 🍽️ 1 🚗 1

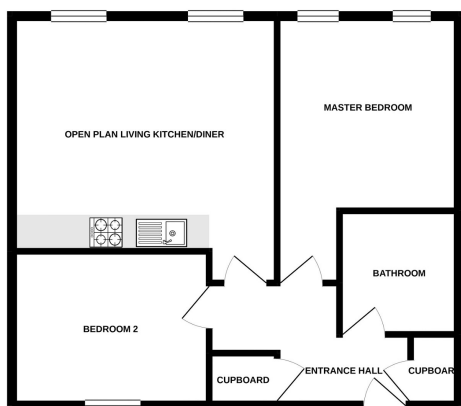


City centre living at its finest! This impeccable and spacious second floor apartment (with lift from the ground floor) benefits from having its own allocated parking space and is quite literally at the doorstep of the Cathedral city centre of Lichfield. The property sits on the second floor of this grand building and benefits from having extremely spacious dimensions with the accommodation including an entrance hall with two storage cupboards off, a very large open plan contemporary living kitchen diner with integrated appliances, and two extremely spacious double bedrooms with magnificent contemporary family bathroom. The property represents a perfect downsize or first time purchase and can only be appreciated with a closer inspection so call us to book your viewing today!

The property is leasehold with a lease of 125 years commencing in 2017. The ground rent is £300 per annum and the service charge is £143pcm (2019-2020 figures).



GROUND FLOOR



Whilst every effort has been made to ensure the accuracy of the floorplan, the floorplan is not intended to be a contract. It is a guide only. The actual floorplan may vary slightly from the floorplan shown. The floorplan is not intended to be a contract. It is a guide only. The actual floorplan may vary slightly from the floorplan shown.

- Two Double Bedroom Second Floor Apartment
- Wonderful Open Plan Living Kitchen Diner
- High Specification Finish Throughout
- Open To A Rent To Buy Option
- Sitting In A Stunning Characterful Building With Lift To All Floors
- Spectacular Bathroom
- City Centre Location With Allocated Parking

